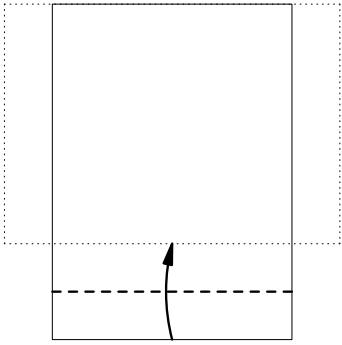
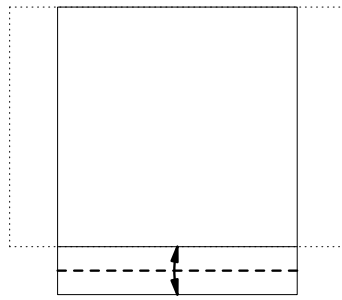


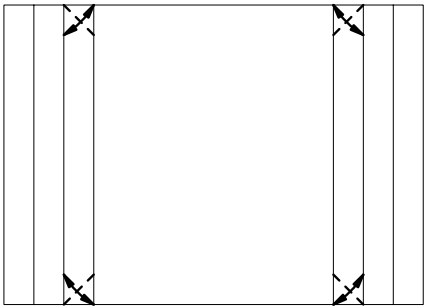
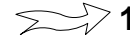
Start with a rectangular sheet



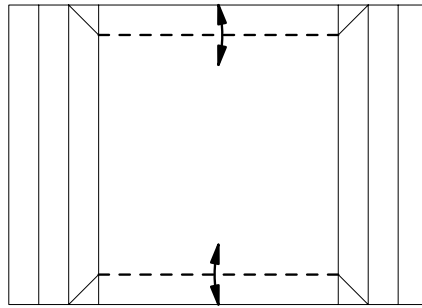
1 Use one sheet as a measure for the other



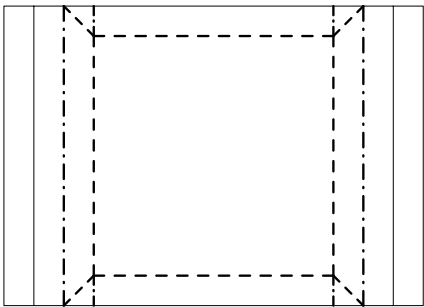
2 Unfold and repeat at other end



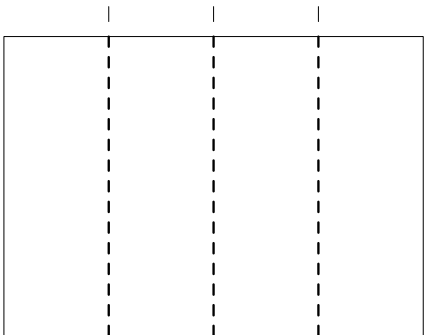
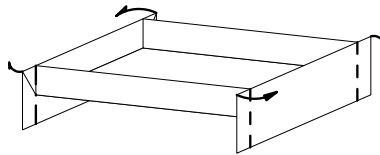
3



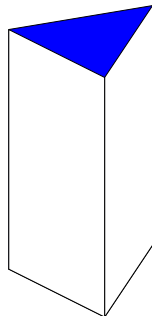
4



5 Make a 'tray' (3D)



7 Divide in four and make a 'tube'



Make five 'tubes' per level
Make two trays per level
Place tray on floor or table
(fold bottom strip up)
Put five tubes on the tray
Place tray upside-down on tubes
Place next tray normally on top
Put five tubes on the tray
Etcetera ...